

London Psychic Educational Centre
17, ASHMERE GROVE, LONDON, S.W.2.

OUTLINE OF AN ADDRESS

DELIVERED TO THE
"Link Association of Spirit Circles"
Wortley Hall, Finsbury Park

Preliminary to the Public Demonstration of

KILNASCRENE

NOVEMBER 28th, 1936.

The Development of Clairvoyance **AND THE** Scientific Formation of Circles

by

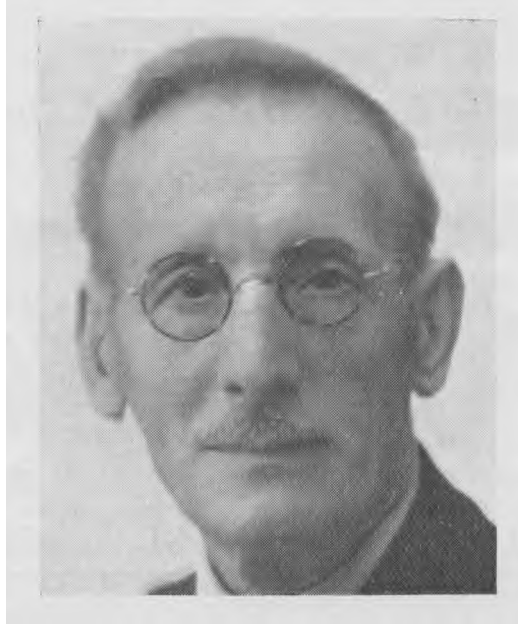
HARRY BODDINGTON

Dipl

Author and Lecturer on Psychic Science

. S.N.U., Vice-Pres. L.D.C., Director London Psychic Educational Centre.

PRICE - SIXPENCE



Sincerely yours,

H. BODDINGTON.

KILNASCRENES.

On Saturday last Mr. H. Boddington lectured on " Kilnascrene and the Scientific Formation of Circles." The request came from the " Link Association of Home Circles." The meeting was held at Wortley Hall, Finsbury Park. It was followed by a demonstration of the methods for using Kilnascrene. After the lecture, groups of about six adjourned to a small room. On the table was a black cloth. Over it was a 100 c.p. electric light with a clear glass bulb. Investigators first gazed at the light for about two minutes. Then, holding their hands under the lamp, examined them. In most cases they were shrouded with a smoky haze. The next move was to draw this haze from one hand to another. This was followed by moving the fingers at right angles to each other until sometimes they were as much as a foot part. If the haze or " lines of force " looking like faint shadows, or threads of cigarette smoke, could be definitely made to change their shape, and could be pointed in every direction, this part of the demonstration was ended. Their backs were now turned to the light and in the shadow formed by their bodies, the movements with the hands were repeated *after removing Kilnascrene* from the eyes. If they habitually wore spectacles, they resumed them to see the aura. Out of 60 people who tested this process 55 declared the result satisfactory. An interesting point emerges here. Out of 40 people who tested the screens before the massed seance, only two failed to see the aura. After the seance, out of 20 people who then tried to see, five failed. Mr. Boddington's conclusion from this result is that this type of seance is exhausting. The address contained so many points of interest to all circle holders that we shall commence a verbatim report in the January issue of the *Christian Spiritualist*.

Clairvoyance, Auricsight and The Scientific Formation of Developing Circles.

In the bible, clairvoyance is called the "discerning of spirits." In the Far East it is common among fakirs, yogis and priests of all denominations. It proves to followers that their particular religion is divinely favoured. With the advent of Modern Spiritualism its practice has become world wide. Psychic Science has arisen in its wake and is rapidly separating superstition from fact and subconscious activity from spirit guidance.

Foremost among those who have unconsciously given an impetus to the study of clairvoyance stands the name of Dr. Kilner. While searching for a method of transforming human radiations into terms of colour, he hit upon an original method of diagnosis. In its essential details it corroborates the statements of clairvoyants and cuts short the long years of preparation at one time thought to be necessary. By utilising a little known dye, called dicyanine, he produced an effect upon the optic nerve which extended normal vision into the regions of the infra red and ultra violet ends of the spectrum. Radiations like the perfume of flowers and the human aura thus became visible.

Following his lines of research I made an apparatus which obviated much of the expense and all the drawbacks of Kilner's original screen. This was registered under the name of "Auro-specs." (*See advt. at end of booklet on "Aura : How to See."*).

Few doctors have the time or patience to travel the path indicated by Kilner. Still fewer care to have their names associated with anything which links them up to psychic studies. For in all experiments those who were mediumistic obtained results impossible to others.

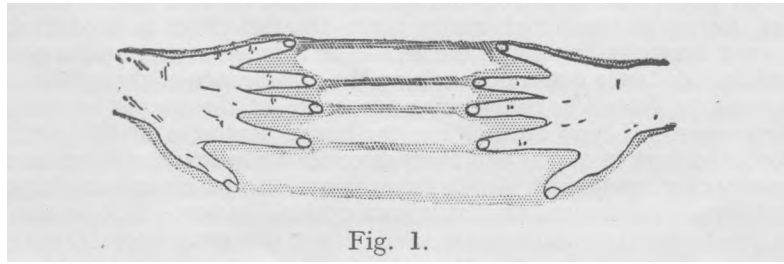
Thus Kilner opened an avenue to psychic science although he never personally saw beyond the etheric body. The avenue leads by the most direct route to second sight and has been adopted by Spiritualists as the safest and most certain method of development. Watching the aura was found to develop impressionism of a high

order. Many of these impressions being far beyond the capacity of the recipient, compel scientists to speculate upon the possibilities of a world of consciousness external to the brain of the experimentalists. Spiritualists go one step farther and claim to know the individualities who thus communicate with mankind.

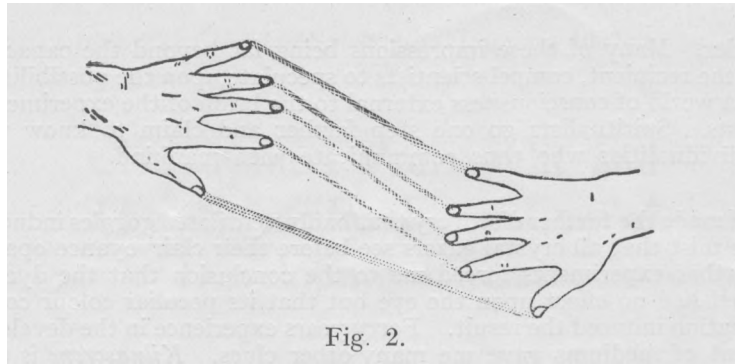
I made the further discovery that badly ventilated goggles induced the mist that all crystal gazers see before their clairvoyance opens. Further experiments forced me to the conclusion that the dye of itself had no effect upon the eye but that its peculiar colour combination induced the result. Forty years experience in the development of mediums gave me many other clues. *Kilnascrene* is the result. Its colours are identical with Kilner's original compound. It dispenses with all the tedious methods of producing mist which rolls away from crystals and other points of concentration but which is the invariable preliminary to actual clairvoyance. All strain is removed from the eyes and the correct passivity induced, which permits impressionism to co-operate with sight, and thus assists all known forms of psychic development.

That the mist and the screens themselves are but a means to the end is proved by the resultant second sight becoming habitual. With steady, regular practice the mind automatically focusses the eye just as normal sight does for near or distant views. Nearly everybody is able to see the vague shadowy lines of force termed aura, after using *Kilnascrene* with correct lighting. I have publicly demonstrated that about eighty per cent. easily register the first stages of auricsight. (*See footnote*).

Density and colour become apparent to a few at once, but the majority merely see grey or black shadows extending from one hand to another. Everyone regards it as an optical illusion until they find that the lines of force can be stretched in every direction. Figures one and two explain what is seen.



These records, signed by the presiding officers of many societies, can be seen at the London Psychic Educational Centre.



An optical illusion always retains the same shape and form. The aura will be found to change its shape and colour in accordance with mental qualities and health or disease. The fortunate few travel onwards from this point to clairvoyance of an exceptional character.

(Our typescript lessons on " Clairvoyance " will be sent post free for 5/-).

METHODS OF PRACTICE.

Noonday is the best time for personal practice. Look through Kilnascrene towards a clear patch of sky for about three minutes. This sensitizes the eye. In full light but with the hands against a dark background, examine the hands. They will presently show in blurred outline. Try and transfer this blurred appearance to the finger tips by letting the middle finger of each hand meet. For awhile it will be difficult to tell exactly where the fingers touch. Then slowly draw the hands apart, as in Figure 1. In a minute or two a faint grey or black shadow will stretch from one finger to the other. From each of the other fingers a similar shadow will develop. Let the finger tips touch many times till this effect is produced. Do not draw the finger tips more than four inches apart unless you find that distance does not break up the appearance of these " lines of force," Note the cobwebby appearance of the spaces between the fingers. If you are holding the hands against a black cloth, close the fingers ; you will then discover a shadow hand against your background which slowly fades away. So far there is nothing to disprove the statement that it is an optical illusion. But we now let the finger tips touch again, and repeat the process of ,drawing the lines from one hand to the other. Figure 2 is now the object to be attained. This is accomplished by moving the hands up and down. Very sensitive people can stretch these lines and keep them in sight while the hands are half a yard part.

We now vary the lighting conditions by drawing down the curtain blinds and turning our backs to the window. It may be necessary to form an additional shadow by interposing our bodies between our hands and the window. *We now take Kilnascrene off* and resume our spectacles if we wear them. Take care meantime, that white light or light colours do not alter the focus of the eyes. We now proceed exactly as we did with Kilnascrene on. After a minute or two, to permit the eyes to adjust themselves to the new lighting, we find we can reproduce almost identical effects. From time to time afterwards, even without sensitizing the eyes with Kilnascrene, you will be able to see the aura. Each succeeding period of practice makes the appearances more and more realistic until at last, the sight of the aura will be as natural as seeing other objects. Very sensitive people develop the power to see the aura in any light and under any conditions. As we have a lady present who proved her powers of diagnosis at the first big Link meeting, I shall presently narrate some of her experiences to show how she has passed from diagnosis to full clairvoyant development as the result of her practice with Kilnascrene. She will reply to your questions and go into fuller details while I am demonstrating in another room.

THE SCIENTIFIC FORMATION OF CIRCLES.

By carefully studying the aura, the scientific formation of circles becomes possible.

If we are holding our seance in the daylight, we proceed exactly as we did during our private experiments. We lay an unglazed, black cloth upon the table as a preliminary. In the full light we now wear Kilnascrene and try to visualise the aura. Music, singing and prayer attune the mind and induce that peaceful condition in which the best results are obtained. The hands meanwhile are resting on the table. Those who have practised privately, now discover many variations in the behaviour of the aura. When the fingers are pointed towards a sitter opposite, the lines of force reach across and join up. Each pair of sitters will presently be found joined up in the same way. Then to the sitters at the side, a similar connection will be made. Around many hands a dark line will intervene between the fingers and the aura surrounding them. The outer edge of the aura is seen to give off rays varying in colour. Some people's hands seem to radiate sunlight while others remain normal. This last type of sitter is no use to the circle unless the appearance can be altered by changing the sitter next to him. Experience has established the fact that where the auras cannot be made to blend, phenomena will not occur. The harmonious circle soon passes from watching grey shadows to other developments. The aura from all hands blends in the centre like a misty cloud in which tiny specks of light dart about. If sitting for automatic writing, this cloud will be found to settle upon the hand of one of the sitters. At each sitting, this appearance is

intensified until automatic writing starts. More usually the cloud poises in the centre and drifts towards the most sensitive person in the circle. The somnolence of entrancement is thus induced. Clairvoyants will see faces and forms in the cloud. If the whole cloud attaches itself to clairvoyants, they immediately see far more vividly than before. The prayerful soul will suddenly be seized with a desire to voice his prayer. More developed trance speakers will pass under complete control. Some faces may become luminous as the result of the cloud settling on their face. Transfiguration and materialisation are thus indicated as the phase the the individual is suited to develop.

Another development of the aura is known as psychoplasm. It is a denser stage of the aura and feels like filmy cobwebs stretching over the face even though it may be invisible. Physical phenomena or voice production are thus indicated. By studying the aura we can trace all phases of mediumship from their very inception and co-operate with the spirit people.

The first half hour is usually devoted to phenomena in full light, but in the second half hour, after Kilnascrene has induced passivity, and the lighting arrangements are reduced to twilight, the more definite psychic results are produced. If you are obliged to hold your seance in darkness, use a clear glass electric bulb of about 100 c.p. For the second half hour lower powered lamps can be used. Dipping in cellulose dyes produces the effect required. Ruby, violet and blue light each have their devotees.

Use the 100 c.p. lamp for three minutes, sensitising the eyes by wearing Kilnascrene after the opening exercises are concluded. With the light full on and the hands laying passively on the dark cloth of the table, examine them and proceed as already indicated. Then for the second half hour reduce the light, remove Kilnascrene and proceed along the usual Spiritualistic lines.

Here let me remark, there is nothing psychic in an instrument. Powers are resident in you, not in materials. But what you really do, is to cover all articles you use with a personal magnetic layer. Psychometrists are thus related to every thought and emotion when they read the article. For this reason you keep your seance room and all articles used, sacred to the user. Keep your own goggles to yourself. Otherwise you may be mistaking other people's conditions for impressions received from the spirit world.

Kilnascrene arouses a perfectly natural extension of sight and sensations which must be experienced to be understood. Our shilling books on " Trance States " and " Psychic Healing " supply all necessary information. The directivity of your mind will deter-

mine the quality and form the aura will take and decide whether it is possible for spirit people to co-operate with you. Our six-penny book on " Aura : How to See, supplies additional proof of its reality.

The essential difference between Kilner's process and ordinary Spiritualistic methods is that he starts from an existent faculty and extends it. By his process it is not possible to see the aura without at least a little light. Spiritualists as a body, are faithists rather than scientists. Their usual process is to shut their eyes and wait, as do the Quakers, for the " spirit to move them." The nett result is often a waste of years before the slightest intimation of their own psychic powers dawns upon them. Many slip into unconscious trance knowing nothing of hypnotic states or of the difference between auto-suggestion and spirit control. Think it over. Learn from auric manifestations how the aura is influenced by your own minds, and also how you can lend this semi-physical power to spirit people to prove to you the reality of after death states.

In order that you may understand how phases of development pass on to higher expressions, as Mrs. Nichol is present, I have requested her to let me use her experiences as an object lesson for you. I have received permission to say exactly what I like, so I shall take full advantage of the opportunity.

Mrs. Nichol came to live in the flat above me nearly six years ago. Visions had occasionally terrified her. To add to her difficulties an unfortunate operation as a child rendered her very deaf. But in the last few years a "voice" butts into all her conversation with peculiarly appropriate remarks. This she hears most distinctly.

She is a most unconventional person. Few of us would dare to walk up to strangers in the street and diagnose their complaints or describe spirit people to them. Particularly would we object to hearing our faults and follies rated by a perfect stranger.

These doings are common-place with her. But nobody, so far as I am aware, has ever objected to this unusual behaviour. On the contrary, her loving regard for the one she is advising is so apparent, that her worst chastisements leave no sting.

Many strive to get her to visit their homes, but she has discovered that her work for the individual is practically finished with the delivery of her message. She has no interest whatever in people avid for more and more phenomena, but who completely fail to apply its teachings.

I soon discovered her sensitiveness, and tried to direct it into rational channels. My first work was to remove an army of prejudices which re-acted continually and kept her in the state popularly known as " nerves." Gradually the beauty of spiritual science prevailed. I got her interested in Kilnascrene. She became an excellent seer and frequently took charge of groups meeting at the London Psychic Educational Centre to study the aura. In the course of this work her ability to diagnose became so definite that I induced her to assist the first Link meeting at Portland Rooms, where I had an exhibition of psychic pictures. I made it my business to interview everybody who received a diagnosis. Without exception, all were satisfied with its correctness.

After this, I had no hesitation in submitting her powers to medical men as opportunity offered. One doctor was greatly intrigued by her simple but direct method of discovering causes as well as past effects. He readily recognised the various ailments affecting him which she claimed to see registered in his aura. Having started at his head, he led her step by step over the whole of his body till at last arriving at his feet she hesitated because she thought she must be mistaken. He noticed the hesitancy and asked what was the matter with his feet. She explained that according to the symptoms he ought to be a great sufferer from gout. She saw his legs and feet all swollen up, but this must be an error because he was wearing ordinary shoes. But she was right. He put her at ease and explained to me afterwards how he reduced the swelling by simple herbal poultices.

He afterwards invited her to his surgery to diagnose a special case. She did so with complete success.

An interesting experience occurred while she was watching a hospital ambulance unloading its burden. Her attention was drawn to a woman standing near. Pendulous in the aura, as if it had already developed, was a fully formed goitre around the woman's face. After a few non-committal observations, she startled her victim by calmly telling her she had a tendency to goitre and ought to see a doctor at once. The woman put her hand up to her face and exclaimed, " How do you know ? " " It is not showing yet ! " Then followed explanations. She had already been informed of the fact and was taking preventive treatment at the hospital.

To her diagnosis has now been added occasional powers of clairvoyance and clairaudience. My next illustrations will show you how she uses it.

A dear old lady in my neighbourhood often tries to impress upon her the fact that she is a most estimable person and had lived an exemplary life with her dear departed husband. On the last occasion while she was repeating this story, a " voice " quietly whispered to my demonstrator " She's telling lies." At the same moment, in the aura surrounding the woman, she saw a man in a terrible state of distress, apparently appealing to the self-acclaimed angel to have a little mercy upon him. She described him. It was the husband. Then followed the picture of the speaker. She appeared to be trying to jab the eyes out of the aforesaid dear departed husband with a long thin piece of wire. She interrupted the narrator to ask why she troubled to tell lies to her. The amazed angel gasped. Nobody had ever before been to rude as to check her garrulous confidences. Mrs. Nichol repeated her statement and described the pictures she saw. She finished by asserting that she could see the very piece of wire the old lady had used. Startled out of her wits the story teller exclaimed, " It was not a piece of wire, it was a knitting needle."

The last illustration I shall give reveals the value of the phenomena and its tremendous implications.

Mrs. Nichol met one of her Christian Science friends outside the new hall they have built in Acre Lane. They had not met for years, and had much of interest to talk about. Our seer presently excused herself to the practitioner and walked to a lady standing nearby apparently waiting for a bus. She asked permission to deliver a message.

Permission being granted, she proceeded to describe a man she saw with her. After a fully detailed description, the lady exclaimed, " Good heavens, that is my brother. I only buried him this morning. I never saw you before. Did you know him ? " Ignoring the questions, Mrs. Nichol stated that it was not the brother's description that interested her. It was his message that mattered. " He tells me, to tell you, to put the dreadful thought out of your mind that you are thinking. He says you are contemplating suicide. If you do, you will be sorry ever after."

The poor soul admitted the fact and had to be escorted to a nearby doorway to hide her emotions. She had been caught in the act and was overwhelmed by the directness of the charge.

She explained that her brother was all she had in the world, and that as there seemed nothing now for her to live for, she was actually standing at the kerbside trying to decide the easiest way

to kill herself. Explanations and consolations followed, and the woman went away assured that death is only the opening to a new chapter in life.

But a very mystified Christian Science practitioner remained to be dealt with. " If you never saw her brother, how could you describe him and get a message from him ? " she demanded. Mrs. Nichol said it was clairvoyance and clairaudience. " Oh, but that's nonsense," said the practitioner, " he's dead, and spirits cannot return and talk to us." But she jumped at the explanation and thought it perfectly natural when Mrs. Nichol said it was just Scotch second sight.

In this, as in hundreds of other cases, Spiritualism brings the healing balm to comfort mourners and bring joy into drab lives. It further compels us to live up to our professions because all thoughts can be read and will have to be reckoned with when we face up to our self-created bar of judgment.

The secret of success is a few minutes
DAILY CONCENTRATION
at the point marked X

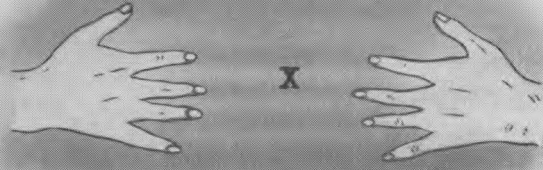


Fig. 1.



Fig. 2.

FINAL NOTES.

KILNASCRENE is as useful for people developing alone as for general seance work. There is no strain on the eyes. They strengthen sight.

Do not be surprised if you find after development that you can do without spectacles or need a lower powered pair.

For inducing passivity KILNASCRENE has no equal. For this reason they are rapidly coming into use for general psychic development.

KILNASCRENE IS NEVER WORN WITH YOUR SPECTACLES ON. For the secondary effects remove Kilnascrene entirely, and resume your spectacles. Always use a dull black cloth for the background. The faint greys of the aura would be lost on white or coloured surfaces.

When sitting alone, sit twice weekly for about half an hour, preferably in daylight, with a clear blue sky to gaze at for about three minutes as a preliminary. Concentrate upon the two-inch space between the tips of the fingers. The live aura forms a better focal point than inert crystals. Correct lighting is far more important in the elementary phases than it will be later. Sight will automatically adjust itself at frequent intervals afterwards without any intention on your part. Finally KILNASCRENE can be discarded altogether. But keep them handy. A long lapse from practice means that you may cease to register and will have to start all over again.

DEMONSTRATIONS.

We are always pleased to see and advise purchasers of Kilnascrene. Kindly remember our director is a busy man and often away lecturing. Appointment is therefore essential. Fix your own time for calling at the

LONDON PSYCHIC EDUCATIONAL CENTRE,

but give us 48 hours' notice in case we may have to re-arrange time of meeting. Visitors travel to Clapham Common Tube Station. From there a penny bus fare passes the top of Ashmere Grove. Alighting point is King's Avenue. Ashmere Grove is three turnings further on the same side as you alight.

MOST SUCCESSFUL METHOD OF DEVELOPING CLAIRVOYANCE.

The following Report is of great value to investigators.

" We used ' Kilnascrene ' in full light and saw the aura distinctly. We all thought it an optical illusion until we found we could make the ' lines of force ' slant in every direction for about twenty inches by merely pointing our fingers at each other.

" We then laid our hands on a black tablecloth and saw the auras blend. I could only see faint steam-like effects, but two of us saw beautiful colours form a whirling mass in the centre of the table. This slowly drifted towards Mrs. N., whose vision suddenly opened so that she saw right into the spirit world and gave us some wonderful illustrations of spirit life and activity.

" We then lowered the light and took Kilnascrene off, and were very surprised to find that several of us could now see clairvoyantly. Each was able to confirm what the others saw.

" My friend is making rapid progress, and sees the perfume of flowers when the sunlight is good. We are hoping, in due course, to diagnose exactly as Dr. Kilner and many sensitives do."

NOTE.---The above report follows very closely the method adopted in public demonstrations of " Kilnascrene." In *The Two Worlds* for July 19th, 1935, fifteen Societies reported the results of their public tests. Out of 427 people tested, only 72 failed to see the aura at first trial.

These records, signed by the presiding officers, can be seen at the London Psychic Educational Centre.

These magnificent results prove that " Kilnascrene " is the best mechanical method of stimulating the clairvoyant faculty yet discovered. They are sent, post free, with full directions for use, from the London Psychic Educational Centre, 17, Ashmere Grove, London, S.W.2, on receipt of 10/-. Foreign countries 10/6 Payable by International Money Order, obtainable at post offices.

The following Books are extracts from the L.P.E.C. Three Guinea Course on Psychic Development. Post free, 1/1 each.

" TRANCE STATES," explains all that is known of Spirit Control.

" PSYCHIC HEALING," deals with obsession and all phases of healing.

" AURA : KILNER SCREENS AND ALL ABOUT THEM," proves the reality of the aura, the foundation of all psychic phenomena and gives Lessons on Clairvoyance.

In printer's hands-

" **PROPHECY, DIRECT AND AUTOMATIC WRITING.**"

Societies ordering 100 advance copies get their name, address and announcements free on the cover. Trade terms —twelve for 9/- (plus carriage).

Development of Clairvoyance.

KILNASCRENE

**SCIENTIFIC FORMATION
OF DEVELOPING
CIRCLES**

Resume of Articles and Addresses

by

HARRY BODDINGTON.

CLAIRVOYANCE

by

HARRY BODDINGTON.

Extracts from an article in the *TWO WORLDS*, October, 1936.

During my forty odd years' association with Spiritualism, I have always been intensely interested in the wide divergence of views expressed by clairvoyants as to the methods of their development and still more by their curious inhibitions.

Many clairvoyants have been describing spirits all their lives, but have never seen one. Their clairvoyance takes the form of peculiarly vivid impressions which apparently have no relationship to actual sight.

Others affirm they see spirit people as clearly as they see physical things and people. Neither type may be able to diagnose disease or even see the radiations from the human body, termed the "aura." Others always see spirit people in a sort of haze. Human beings and animal and plant life are shrouded in the same envelope. Many diagnose disease without seeing the aura, but others would be quite unable to diagnose unless they saw the aura and noted its variations.

I find the best psychics are subject to mediumistic experiences all their lives, but until they learn to understand them, merely regard them as a sign of nervous exhaustion, or hallucinations, pure and simple.

At the other extreme we discover undisguised superstition, which sees in every trifling incident a serious omen fraught with tremendous possibilities. Tea leaves, crystals, black mirrors and many other objects are used as points of concentration. Obviously the pictures seen are not in the tea leaves, mirrors or other focal points, but in the etheric world which interpenetrates and surrounds them all. Its apparent location will vary with the mental attitude and conditioning of the seer. Thus we get Mons. Romaines' volume on "Eyeless Sight" he located clairvoyance in the skin. Some of his patients, apparently saw through their toes ;

others through different parts of the body. Hypnotists have declared for " externalisation of sensibility," which the earlier mesmerists located as " zones of consciousness." The present fashion is to locate it in the pineal and pituitary glands or above the nose. The Asiatic contemplates the solar plexus. Others discover nerve centres elsewhere which become their focal point.

To the tea leaf gazer, the psychic world is in the tea cup, but the true seer will visualise a wider and far grander world of consciousness through which his soul can travel. He will not despise the day of small things, but will utilise them as steps on his upward pathway. The tool will not then become a limitation. This subconscious bias is obvious in many cases. Specific forms of training often create a mental barrier through which the seer rarely breaks. Thus mystics revel in celestial visions but are quite unable to prove their journeyings, which the psychometrist and yogi do with ease.

Yogis, fakirs, and psychometrists during development usually start from the opposite end. To prove their case they relate themselves to the earth and thus shut themselves off from the mysticism of the other type of extremist. The wiser course, is to keep an open mind, test all theories and draw your own conclusions.

My study of Dr. Kilner's process and attempts to find people who can carry on his work in a scientific way, has introduced me to still more variations, both of psychic development and the mental outlook of diagnosticians. I believe Kilner himself never saw spirit people, although he got as far as describing the " etheric " bodies of his patients. Yet his book, *The Human Atmosphere*, with about seventy illustrations, is still the most valuable text-book clairvoyants who diagnose disease can study.

The basis of his diagnosis is entirely different from that of the majority of Spiritualists. His study of secondary colour images led him by a speedier process to visualise the aura which is the section most studied by diagnosticians.

In Kilner's case, the discovery was due to the active experimental work of a scientific brain. In most Spiritualistic forms of development the same result is only attained after years of patient concentration. It is then attributed entirely to aid given by spirit helpers. That sight of the aura is a perfectly normal attainment rarely meets with their acceptance. It is here that I have had to combat the prejudices of various schools of thought. Particularly bitter are those who charge heavy fees for " developing." That their long years of tuition can be dispensed with, and the goal reached in a few minutes, is not pleasing to them.

All manner of stupid objections are advanced to prevent pupils testing Kilner's process. Spirit aid did not enter into his theory at all. Diagnosis to Kilner is merely an extension of normal sight applied to radiations which become visible at the infra red and ultra violet ends of the spectrum which ordinary sight does not see. That it would open the door to a still wider field of psychic vision, did not occur to Kilner because his self-set limitation was the human body and its attributes. The re-orientation of his outlook would have carried him on towards effects common among mediums. Whether it would have been wise to refrain from his specialised study in order to do so, is another question. We are not discussing that aspect at the moment.

In the Yogi philosophy we get other methods of training. Children commence their exercises before they can talk. All the habits of life are arranged to lead the mind in a particular direction. An entirely different mental outlook and type of development results. As with hypnotic subjects, so with specific forms of mental training. It becomes almost impossible to visualise anything outside, the range of that training. It is the same with clairvoyance. The limitations are mental rather than actual. Development along psychometric lines develops very wonderful test mediums, but they are useless as guides concerning the higher reaches of spirit life.

DR. KILNER'S GREAT WORK.

The Human Atmosphere has a hundred pages dealing with optical effects. What are termed " secondary colour images " are specially examined. A simple experiment will enable students to realise the wide range they cover. Gaze for a couple of minutes at a strong light. Then shut it off, and in complete darkness, with the eyes either open or closed, a beautiful vivid range of colours will chase each other across the retina so long as the effects of the light continue to affect the optic nerve. The restful pose at bed-time is best for the experiment. Blinking the eye-lids changes or obliterates the colours, but in a quiet moment or two they will return and can be examined.

In all cases I find that those who can see auric colours have the faculty for diagnosis and the " discerning of spirits." Their spirit guides act with more definiteness, because the aura is the link manipulated and visible from both worlds.

So far, I have failed to discover anyone who can use the complementary colours in the way Kilner advocates. The border-line between ordinary sensory perception and psychic activities is so fine that the one continually merges into the other. The further development usually takes the form of vivid and distinctive

impressions. Many get ideas of prescriptions quite foreign to their general practice. One doctor utilises the services of an artist seer who sketches-in the auric colours of patients while the doctor is diagnosing them in the ordinary way. The corroborative testimony and the checking of errors has by this process been invaluable.

In one or two cases I found that clairvoyance takes the form of transforming the aura at the finger-tips or from the solar plexus, into a tiny ball of light. This travels to a spot on the patient's body. Invariably, I find that this is the part requiring most serious attention. Concentration on this point then produces a perfect diagnosis. As this point of light is not under the control of the diagnoser, but selects its own location, it indicates to me a measure of spirit co-operation even though the seer may repudiate all knowledge of spirit_activities.

It is here that I differ from Dr. Kilner. In so far as he regarded the inspection of the aura as a purely physical problem, I can agree up to the point of radiations from the physical body. But I am equally certain that radiations from the soul body exist which can only be visualised by " soul sight."

The interesting fact continually emerges that those who develop clairvoyance by means of Kilnascrene become " colour conscious. An invaluable aid to artists. They all assert there are no earthly colours with which they can compare the newer tints they now visualise. It is within the range of these experiences that I believe we shall get newer ideas concerning the spirit world. Thoughts become expressed in terms of colour. Passions and emotions register in the same way. The spirit world is a thought world in a very special sense. Some day I believe we shall be able to view thought as colour and every artistic sense will have its corresponding colour vibration.

The London Psychic Educational Centre

17, Ashmere Grove, Brixton, London, S.W.2.

Director: H. BODDINGTON, Author and Lecturer.
Telegraphic Address: "CELLULOIDS, LONDON."

KILNASCRENE DEVELOPS CLAIRVOYANCE

Why
Not
You ?

FREE TESTS BY APPOINTMENT at the L.P.E.C.
10/- post free with full directions for use. (10/6 abroad).

REPORTS IN THE PSYCHIC PRESS FOR 1934-5 PROVED IN PUBLIC TESTS THAT 427 PEOPLE OUT OF 506 SAW THE AURA OR BECAME CLAIRVOYANT AT FIRST TRIAL. Signed by the Presiding Officer can be seen at our office, with other testimonials.

AUROSPECS is the famous dicyanine compound used by Dr. Kilner for diagnosing disease. Post Free One Guinea per pair, including instructions. Abroad 1/- extra.

Dr. Kilner's "Human Atmosphere," post free 11/-, explains the process and optical laws relating to aura. Contains 60 illustrations.

PSYCHIC HEALING gives practical tuition in all known methods of treatment and diagnosis Post free 1/1

TRANCE STATES is a standard treatise on development by SPIRIT CONTROL. It defines auto-suggestion and its limitations do. 1/1

In Printer's hands—

PROPHECY, AUTOMATIC AND DIRECT WRITING gives up-to-date information on these important phases, with warnings do. 1/1

AURA KILNER SCREENS and all about them, with lessons on CLAIRVOYANCE do. 1/1

Societies are placed on trade terms. Assorted dozen Shilling books, 9/- Postage extra.

Yoga, Theosophy,	}	Typescript Lessons...	... Set, Post free, 2/-
Quakers, Shakers	
Kardec Swedenborg	 do. 2/-
Clairvoyance and Psychometry—How to Develop	 do. 5/-

International Money Orders can be obtained at any Post Office abroad.
Cheques are more expensive and entail delay.

All the above are obtainable at the London

PSYCHIC EDUCATIONAL CENTRE

17, ASHMERE GROVE, LONDON, S.W.2.

Herne Bay Psychic Stores

3, CAVENDISH ROAD, HERNE BAY, Kent.

AGENTS FOR ALL "TWO WORLDS" APPARATUS AND BOOKS.
Also for THE LONDON PSYCHIC EDUCATIONAL CENTRE.

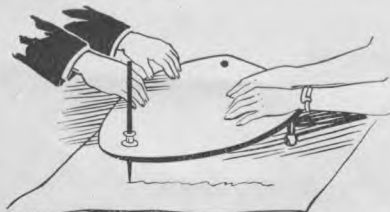
PRICE LIST

All appliances needed for the Seance Room will be obtained at short notice, if not on our list.

Postage on Foreign Book Orders is the same as Great Britain. On other goods an average of One Shilling extra must be allowed for postage.

As cheques cannot be accepted until they are cleared and exchange rates allowed for, it is advisable to use International Money Orders.

The following goods are sent Post Free in Great Britain :—



PLANCHETTES ... from 2/- each
With Ball Bearings 2/6
"TWO WORLDS" PLANCHETTE,
with ball bearings and Ouija adaptor
8/6.



CRYSTALS from 5/- each.

Spirit COMMUNICATOR (as illustration)
3/9 Carriage Free.
Planchette—Ouija Combination.

SEANCE TRUMPETS—Aluminium. Two
piece, 7/6. Single piece, 10/-

LUMINOUS PAINT—With two brushes
and tin of neutral priming, ... 3/4

LUMINOUS PLATES, Size approximately
9 by 6 inches ... 4/9

LUMINOUS CROSSES. Hangs up. About
5 by 3 inches ... each 1/-

SEANCE VIBRATORS, 9/- complete. Battery refills, 2/-.

CLAIRVOYANCE SPECS. The only genuine and tested glasses are
KILNASCRENES ... Post Free 10/-
Many useless imitations are on the market. Finest method of Clairvoyant
Development known. Full instructions enclosed with each pair. Purchasers
of Kilnascrene should also buy "Aura Kilner Screens, all about them,"
post free, 1/1.

Seance Room Purifiers. Incense Cones, per box of 18 ... 1/6.

Joss Sticks, Bombay black thick, or thin Bombay brown, 6d. per dozen.

Ditto Superior thin, 9d. per dozen.

Ditto Jasmine, Musk, Amber, or Kasturi, 1/- per dozen.

Incense Burners, Heavy Lacquered Artware Buddhas, 2/-, 4/-, 7/6 each.

Mantlepiece Ornaments—Triune Monkey Gods, 4/-, 2/- and 1/6 each.

Motto : "See no Evil, Speak no Evil, Do no Evil."

Watch Chain Lucky Charms—Black Buddhas, Gilt Buddhas, Ivorine Elephants,
1/- each.

PSYCHIC RESEARCH TABLE (on view by appointment at the London Psychic
Educational Centre). Glass top screwed on. Fitted electric light.
Impossible for human hands to touch interior. Cabinet under. 22/6.

